

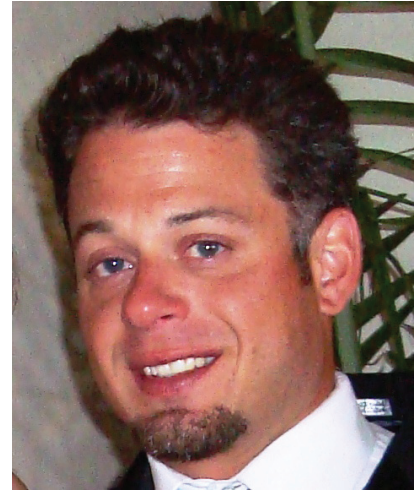
FOR IMMEDIATE RELEASE

Hayward, CA - May 14, 2012

**ARBORWELL WELCOMES JOEY MONTELEONE TO RUN
TREE MOVING DEPARTMENT**

**Local Tree Care Company Expands Tree Relocation
Capabilities**

Arborwell, California's leading professional tree management company has announced the addition of Joey Monteleone as the Manager of the company's Tree Moving Department.



Arborwell has enhanced their Tree Moving Department with the goal of providing top-of-the-line tree relocation and preservation services. All of their processes from evaluation, preparation, boxing, relocating and aftercare are accomplished within the Arborwell organization.

“The ultimate objective with the development of our Tree Moving Department is to continue to provide our customers with a full scope of excellent tree service across the board,” says Peter Sortwell, Arborwell’s President & CEO. “With his broad experience and extensive knowledge, Joey Monteleone is a perfect candidate to manage and grow our tree moving and relocation department.”

Joey Monteleone has extensive experience in large to giant tree transplant and supply. Monteleone has worked in the tree and landscape industry for 8 years as an account manager, project manager and business developer. He studied Business Management at Metropolitan State College of Denver from 2001-2005. Monteleone also served 4 years in the US Navy as an electrician and traveled across the globe.

“I am excited to be part of the Arborwell Team and look forward to seeing where this new endeavor takes us,” says Monteleone.

About Arborwell

Arborwell’s team of ISA-certified arborists studies each tree’s overall system to ensure longevity and vitality from the ground up. Arborwell offers tree pruning, removal, preservation, installation, plant health services, and arborist consultations to contractors, commercial property managers, golf courses, municipalities, and residential properties. Arborwell serves the San Francisco Bay Area, Sacramento, Orange County, and San Diego communities.